



气动夹爪 G20 Pneumatic gripper G20

主要特点:

- 铝制外壳
- 曲柄结构原理
- 铁质夹臂
- 2 个安装面(在 Ø28 mm 气缸的前方和后方)
- 气缸缸径: 20 mm
- 2 个 G1/8"气源接口
- P+F 电感式接近开关(M12x1 接口)
- 电感式传感器感应原理



Main characteristics:

- Aluminum flanks
- Toggle action mechanism
- Steel arms
- 2 mounting areas (back and on the cylinder Ø28 mm)
- Pneumatic cylinder bore: 20 mm
- 2 feeding ports G1/8"
- Inductive proximity switch P+F (connection M12x1)
- Inductive sensor of presence element



[PDF](#)



[3D Step](#)



[Index](#)

索引.

Index.

页码 Page	描述 Description	
1	主要特点 Main characteristics	
2	订货举例 Ordering example	
3	尺寸页码 Dimensional page	G20-GO1...
4		G20-GO2...
5	图表 / 气路图 Diagram / Pneumatic plan	
6	电感式接近开关图表/Sensore induttivo sul supporto Diagrams for Inductive proximity switch/Inductive support on support	
7	操作说明 Operating instructions	打开角度调整 Opening angle change
8	备件/ Spare parts	
9	备注 / Notes	



订货举例.

Ordering example.

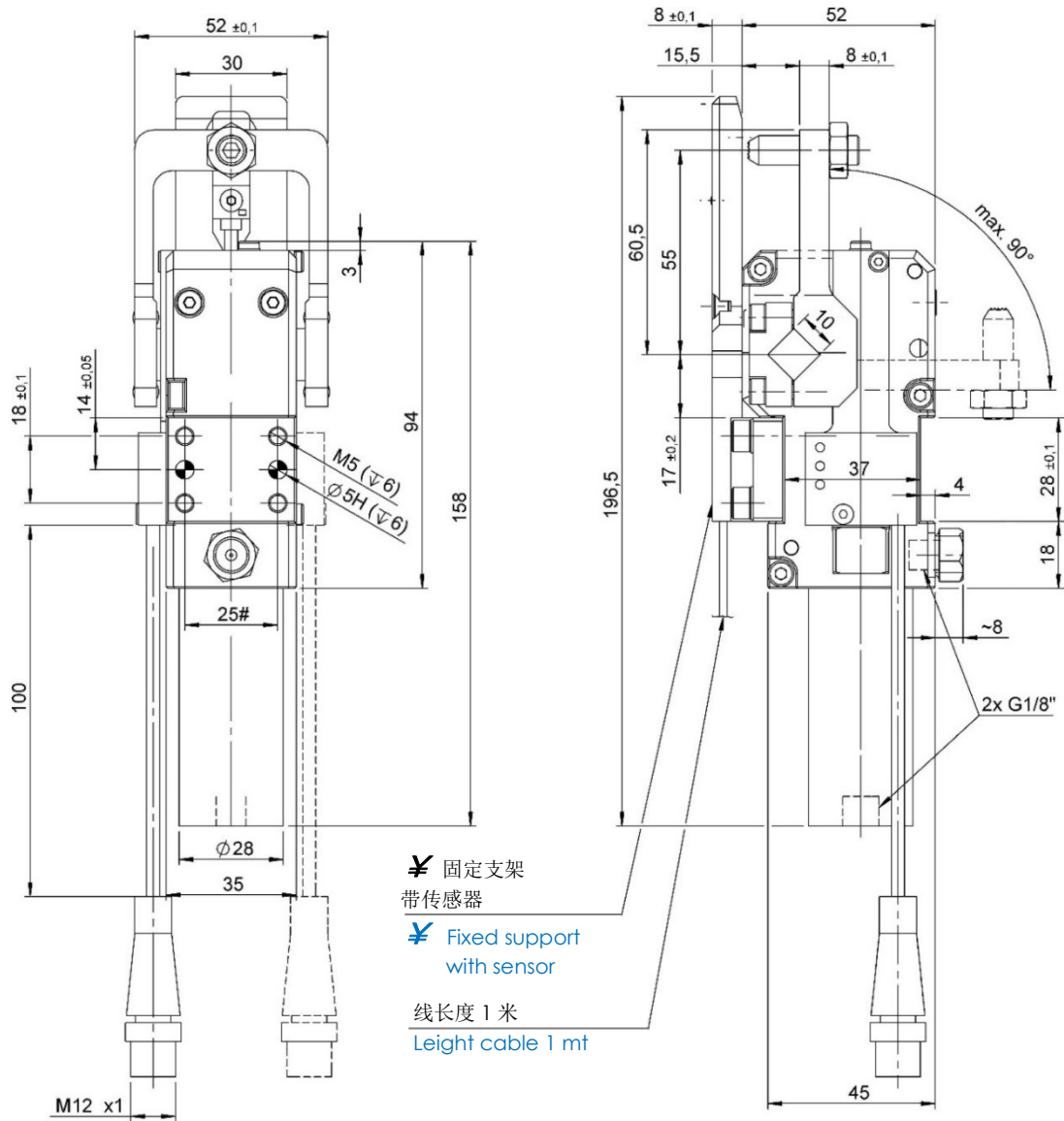
G20	-	GO2/P	-	I	-	90	-	X	-	D						
<p>夹爪类型和气缸缸径: Gripper type and cylinder bore:</p> <p>G20 气缸缸径 20mm cylinder bore 20mm</p> 		<p>传感器类型: Type of sensor on support:</p> <p>X: 无传感器 without</p> <p>I: 电感式 inductive</p> 		<p>打开角度: Opening angle:</p> <table border="1" style="width: 100%; text-align: center;"> <tr> <td>15°</td> <td>30°</td> <td>45°</td> <td>60°</td> <td>75°</td> <td>90°</td> </tr> </table>		15°	30°	45°	60°	75°	90°	<p>接近开关类型: Type of proximity switch:</p> <p>X: 无 without</p> <p>I: 电感式 inductive</p> 		<p>锁紧销类型: Type of lock pins:</p> <p>X: 不带销 without pin</p> <p>C: 销子带活动头 pin with swinging</p> <p>D: 销子带橡胶头 pin with rubber head</p>		
15°	30°	45°	60°	75°	90°											
<p>夹臂类型: Type of arm:</p> <p>XXX: 无夹臂 without arm</p> <p>GOX: 夹臂不带销子 arm without pins</p> <p>GO1: 夹臂带一个销子, 不带固定支架 (请参考第 3 页) arm with 1 pin and without fixed support (see page 3)</p> <p>GO1/P: 夹臂带一个销子, 带固定支架 (请参考第 3 页) arm with 1 pin and with fixed support (see page 3)</p> <p>GO2: 夹臂带 2 个销子, 不带固定支架 (请参考第 4 页) arm with 2 pins and without fixed support (see page 4)</p> <p>GO2/P: 夹臂带 2 个销子, 带固定支架 (请参考第 4 页) arm with 2 pins and with fixed support (see page 4)</p> 																



G20-GO1...

搬运夹爪, D. 20, 1 个销子 + 固定支架

Transfer gripper, D. 20, 1 pin + fixed support



标准打开角度 90°, 每 15°可调.

Standard opening angle = 90°, it's possible set inferior angles with intervals of 15°.

≠ GO1 = 无固定支架
GO1/P = 带固定支架

≠ GO1 = without fixed support
GO1/P = with fixed support

#公差: 定位销孔 ±0.02, 螺纹孔 ±0.1

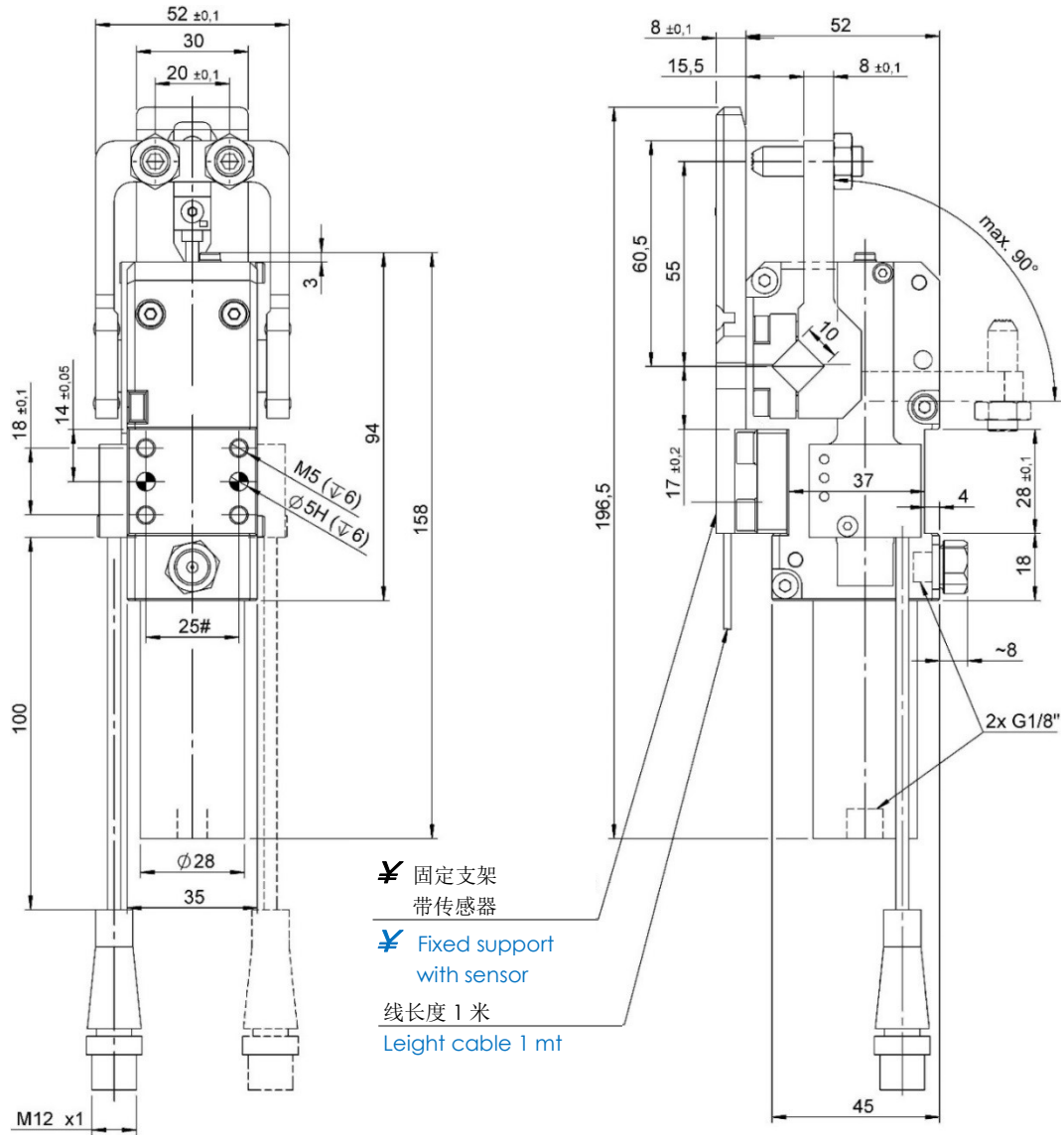
#Tolerances: dowel holes ±0.02, screw holes ±0.1

类型 Type	气缸缸径 Cylinder bore	保持力 Holding moment	重量 Weight	工作压力 Working pressure	最大夹紧力矩 (5 bar) Clamping max. torque (5 bar)	空气耗气量 (5 bar) Air consumption (5 bar)
	[mm]	[Nm]	[Kg]	[bar]	[Nm]	[l]
G20-GO1...	20	50	~ 0,8	2 - 8	20	~ 0,1



G20-GO2...

搬运夹爪, D. 20, 2 个销子 + 固定支架
Transfer gripper, D. 20, 2 pins + fixed support



标准打开角度 90°, 每 15°可调。

Standard opening angle = 90°, it's possible set inferior angles with intervals of 15°.

- ☞ GO2 = 无固定支架
GO2/P = 带固定支架
- ☞ GO2 = without fixed support
GO2/P = with fixed support

#公差: 定位销孔 ±0.02, 螺纹孔 ±0.1

#Tolerances: dowel holes ±0.02, screw holes ±0.1

类型 Type	气缸缸径 Cylinder bore	保持力 Holding moment	重量 Weight	最大夹紧力矩 (5 bar) Clamping max. torque (5 bar)
	[mm]	[Nm]	[Kg]	[Nm]
G20-GO2...	20	50	~ 0,8	20

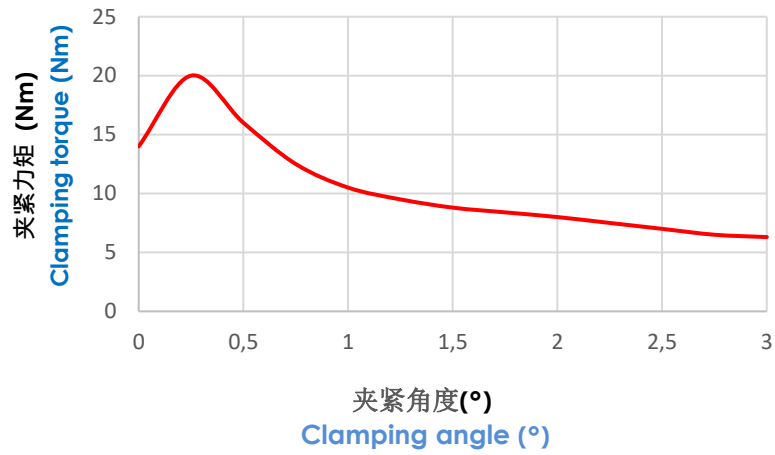


图表.

Diagram.

夹紧力矩 (Nm)

Clamping torque (Nm)

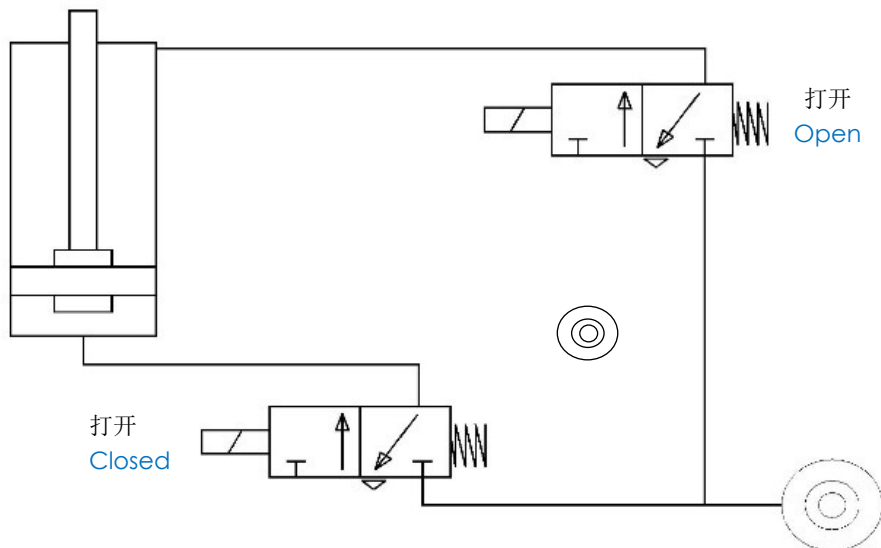


最大夹紧力矩 (5 bar): **20 Nm.**

Max. clamping torque (5 bar): **20 Nm.**

气路图.

Pneumatic plant.



工作气压 Working pressure	空气耗气量 (5bar) Air consumption (5bar)
[bar]	[l]
2 - 8	~ 0,2



电感式接近开关图表 (cod. 06160/C).

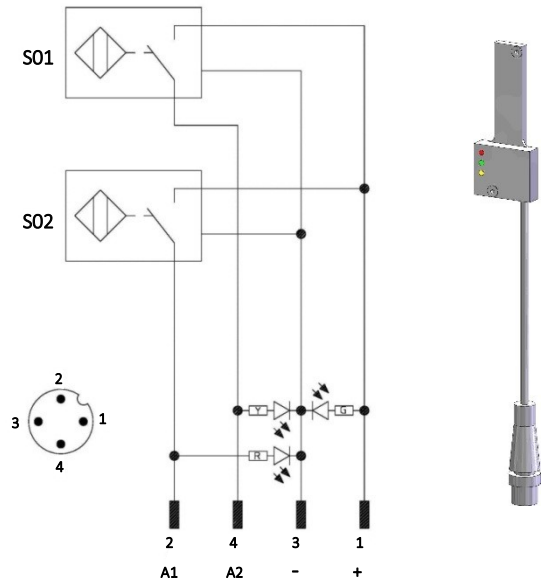
Diagram for Inductive proximity switch (cod. 06160/C).

技术数据 (VEP):

- 输出类型: PNP;
- 供电电压: 10-30 VDC;
- 最大换向电流: 200 mA;
- 电源供应: < 20 mA;
- 电压差: < 1,8 V
- 温度范围: -25° / 70° C.

Technical data (VEP):

- Output type: PNP;
- Feeding voltage: 10-30 VDC;
- Max. commutating current: 200 mA;
- Power supply: < 20 mA;
- Voltage drop: < 1,8 V;
- Temperature range: -25° / 70° C.



S01 = 打开信号

S01 = opening signal

S02 = 夹紧信号

S02 = closing signal

Y = 黄色 LED / yellow LED

G = 绿色 LED / green LED

R = 红色 LED / red LED

1 = 棕色线 / brown wire

2 = 黑色线 / black wire

3 = 蓝色线 / blue wire

4 = 白色线 / white wire

支架电感式传感器图表.

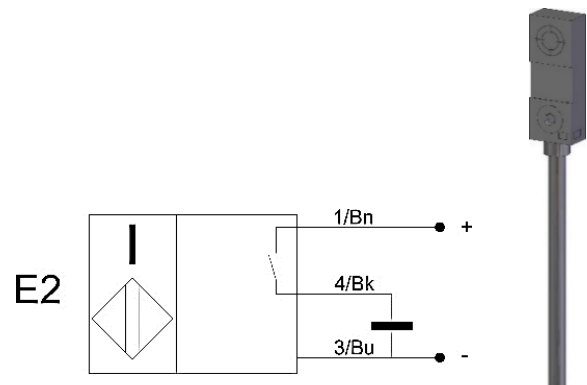
Diagram for Inductive sensor on support.

技术数据:

- 输出类型: PNP;
- 供电电压: 10-30 VDC;
- 最大换向电流: 100 mA;
- 电源供应: ≤ 10 mA;
- 电压差: ≤ 2 V;
- 温度范围: -25° a 70° C.

Technical data:

- Output type: PNP;
- Feeding voltage: 10-30 VDC;
- Max. commutating current: 100 mA;
- Power supply: ≤ 10 mA;
- Voltage drop: ≤ 2 V;
- Temperature range: -25° a 70° C.



作用距离: 4 mm

线长度: 1000 mm

Operating distance: 4 mm

Leight cable: 1000 mm



操作说明

Operating instructions.

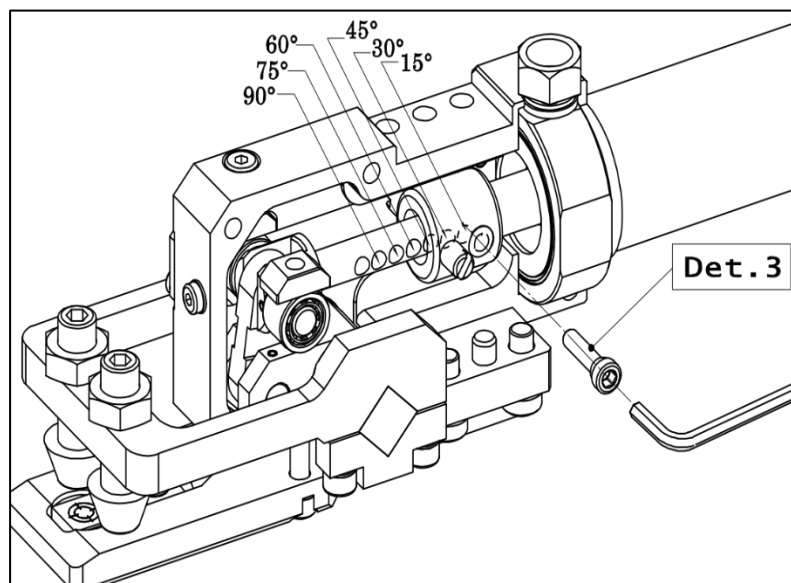
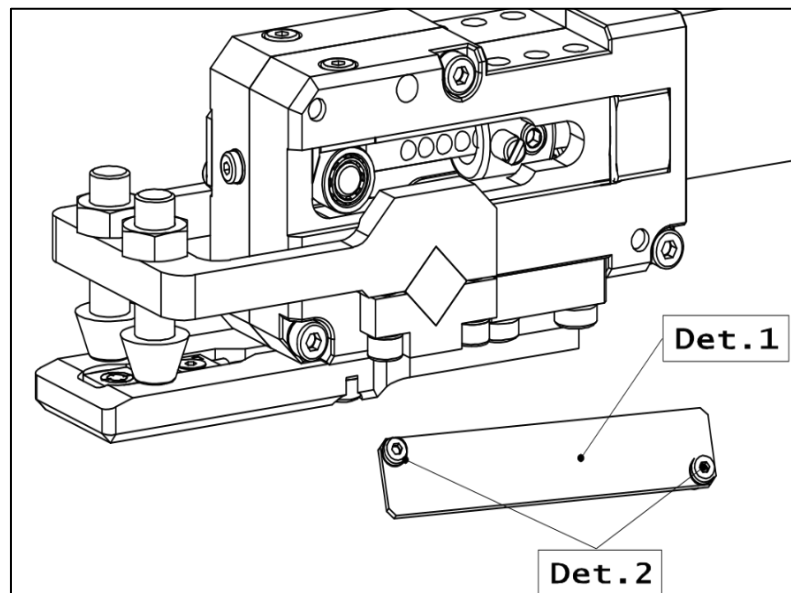
打开角度调整.

- 在角度调整区域或者传感器区域去掉保护罩 (Det.1) 卸下两个 M3 螺钉 (Det.2), 卸下螺纹销 (Det.3);
 - 移动夹臂夹 (Det.4) 到达需要的角度位置;
 - 在正确的角度位置拧紧螺纹销 (拧紧力 = 8Nm) ,盖上保护板并拧紧螺钉。
- 电感式接近开关会自动校正, 不需要任何操作。.

Opening angle change.

- Remove the protection (Det.1) from the angle adjustment compartment or the inductive sensor, unscrewing the 2 screws M3 (Det.2), and unscrew the threaded pin (Det.3);
- Move the clamping arm (Det.4) to the required angular position;
- Tighten the threaded pin (clamping torque = 8 Nm) in the hole that corresponding to the desired angle and refit the protection inside the compartment.

The setting of the inductive proximity switch is automatic and doesn't require any operation.





备件.

Spare parts.

# Kit	图片 Picture	描述 Description	代号 Code
夹臂 Arm asseby		夹臂类型 GO1 Arm type GO1	06517/C
		夹臂类型 GO2 Arm type GO2	06307/C
固定支架 Fixed support		固定支架 Fixes support	06300/C
锁紧销 Lockpins		锁紧销带滚花头 Pin with swiging knurled head	3/080/C
		锁紧销带橡胶头 Pin with rubber head	06516/C
电感式传感器 Inductive sensor		支架传感器 Inductive sensor on support	3/340
接近开关 Proximity switch		VEP电感式接近开关 Inductive proximity switch VEP	06160/C
密封圈组件 Seals kit		G20气缸密封圈组件 Seal components for pneumatic cylinder G20	SCR-CILG20
气缸 Pneumatic cylinder		20 mm 完整气缸 Complete pneumatic cylinder bore 20 mm	06306/C

.....

.....

.....

.....

.....

.....

.....

.....

.....

.....

.....



这个目录取消并替换了以前的目录。我们保留在没有任何通知的情况下进行添加或更改的权利。产品目录中的产品是标准的;任何特殊申请的查询都由技术/销售部门评估。完整的文档属于VEP自动化s.r.l, 未经许可, 任何形式的复制都是禁止的。

This catalogue cancels and replaces the previous ones. We reserve the right to make additions or changes without any notice. The products in the catalogue are standard; any enquiry of special applications is evaluated by technical/sales department. The complete documentation belongs to VEP Automation S.r.l. and without permission any kind of reproduction is forbidden.

VEP Automation Headquarters

VEP Automation S.r.l

Via San Felice, 37
10092 Beinasco – Torino (Italy)
Tel. +39 011 3972572
Email: info@vepautomation.it
Web: www.vepautomation.it

VEP Automation Germany

VEP Automation GmbH

Fritz Liebsch Str. 29
D 26723 Emden (Germany)
Tel. +49 04921 450758
Email: info@vepautomation.de
Web: www.vepautomation.de

VEP Automation America

VEP Automation S.A. de C.V.

Av. Toluca 373 - 3A Col. Olivar de los
Padres Del. Álvaro Obregón
01780 CDMX – (Ciudad de México)
Tel. +52 55 8582 8025
Email: info@vepautomation.mx
Web: www.vepautomation.mx

VEP Automation China

柯莱普自动化科技有限公司

苏州柯莱普自动化科技有限公司
地址: 中国江苏省苏州市吴中区友新路 168 号
张玲大厦 2 幢 333 室
Tel.: +86 0512 65753608
Email: info@vepautomation.cn
Web: www.vepautomation.cn